

January's Activities**Section 1 & 2 - Alconbury to the East Coast Main Line**

In January the construction team has been busy creating a causeway across the lakes west of the River Great Ouse. This will allow a continuous access from the Buckden Road and works around the new site compound at Brampton.

The crossing of the Ouse is a critical part of the construction programme so its early completion is vital.

Further archaeological works and site clearance have also been undertaken. This has required a number of lane or carriageway closures on the A1 around Alconbury and Brampton.

The team has now started to move into their new offices at Brampton.

Section 3 - East Coast Main Line to Swavesey

Work has continued on our permanent compound at Ermine Street, and the team expect it to be ready for occupation early in February.

Construction of our haul road from Ermine Street to the East Coast main line has been completed and plant crossing points (to allow our traffic to cross the side road) have been put in place at Silver Street.

There has been further works undertaken on site clearance and archaeology along the route of the new road

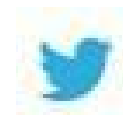
Section 4 & 5 - Swavesey to Milton

Works continued on the construction of the main project compound at Swavesey Junction. The first staff moved into the building on 16th January and they will be joined by more colleagues over the coming weeks.

Archaeological works and site clearance continues to be undertaken alongside the A14 between Swavesey and Girton in preparation for the main construction works.

A number of overnight lane and carriageway closures have taken place on both the East and Westbound side of the A14. This has allowed us to begin installing CCTV and speed cameras in preparation for the implementation of narrow lanes on both carriageways.

You can contact us on our dedicated A14 Public Helpline 0800 270 0114
Scheme information is also available at our website
www.highways.gov.uk/A14C2H and you can also follow us at.



Works for February 2017

Section 1 & 2 - Alconbury to the East Coast Main Line

Works at the River Great Ouse will see the installation of a temporary pontoon crossing. This will allow our machinery to access the east side of the river.

Following the completion of the pontoon crossing, a temporary bridge (Bailey bridge) will be erected. This will then replace the pontoons and will allow the regular movement of machines and materials across the Ouse. This access will allow the construction of bridge bases for both the river crossing and the railway crossing further to the east.

Continued site clearance and archaeological works will necessitate further overnight lane and carriageway closures of the A1 at both Alconbury and Brampton during the month.

Section 3 - East Coast Main Line to Swavesey

Once the compound at Ermine Street is completed staff will begin to migrate into this building from our temporary facilities.

Additional plant crossing points will be created on Hilton Road and this will mean a weekend closure of the road between 8 am Saturday 11th February through to 5 am Monday 13th February.

Archaeology is continuing at the site of the borrow pit near to Hilton Road.

Section 4 & 5 - Swavesey to Milton

Once the installation of CCTV and speed cameras is completed, work will begin to implement the narrow lanes on both carriageways of the A14. This will mean a reduction in the speed limit to 40mph in both directions.

The first narrow lanes are to be located on a section of the A14 approximately half a mile either side at the Bar Hill Junction. The activities needed to create these lanes (including white line removal, renewal and safety barrier placement) will take place at night under road closures on the following dates.

Eastbound carriageway 20th and 21st February

Westbound carriageway 22nd and 23rd February

You can contact us on our dedicated A14 Public Helpline 0800 270 0114
Scheme information is also available at our website
www.highways.gov.uk/A14C2H and you can also follow us at.



In preparation for work on the first stage of the new local access road a closure of the Avenue in Madingley will be implemented on 20th February. As a consequence of this there will no access either onto the A14 from the Avenue, or into the Avenue from the A14.

Archaeological work will continue at both Girton Junction and adjacent to the A14 near to the Dry Drayton junction.

Site clearance will also continue in preparation for construction works and this will mean a number of overnight lane closures along the A14

A14 / A1 Road Closures

Further overnight closures will take place on both the East and Westbound carriageways of the A14.

Works on the westbound carriageway (Girton to St Ives) are scheduled for Monday 6th, Tuesday 7th, Wednesday 22nd and Thursday 23rd February

Works on the eastbound carriageway (St Ives to Girton) are scheduled for Wednesday 8th, Thursday 9th, Monday 20th and Tuesday 21st February

These closures will allow us to finalise the installation of both CCTV and speed cameras in preparation for the implementation of narrow lanes on both carriageways.

For safety reasons this work has had to be carried out at night under a full carriageway closure of the A14.

You can contact us on our dedicated A14 Public Helpline 0800 270 0114
Scheme information is also available at our website
www.highways.gov.uk/A14C2H and you can also follow us at.

